

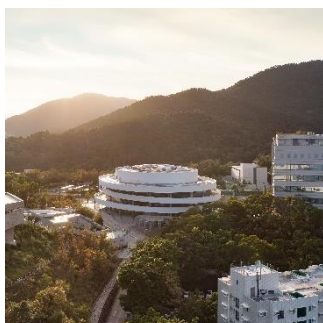


MIPIM ASIA AWARDS 2023 WINNERS

Projects are listed in alphabetical order.

Final ranking of the Gold, Silver and Bronze prize winners will be announced at the Gala Dinner after the final votes from the MIPIM ASIA participants on site

BEST ALTERNATIVE PROJECT



HKUST Shaw Auditorium

Hong Kong SAR, China

Architect: Henning Larsen Architects Hong Kong Limited

Developer: Hong Kong University of Science and Technology (HKUST)

Other: Wong Tung & Partners (Executive Architect), WSP (Building Services Engineer, Civil & Structural Engineer Sustainable Design Consultant), Inhabit (Façade Engineer & Lighting Design), Urbis (Landscape Architect), Marshall Day (Acoustic Consultant), Build King (Main Contractor)



Petronas Leadership Centre

Kuala Lumpur, Malaysia

Architect: VERITAS Architects

Developer: Petronas



Pujiang Center Community

Shanghai, China

Architect: VLINKER

Developer: VLINKER

BEST HOSPITALITY, TOURISM AND LEISURE PROJECT



Hotel Indigo Nanjing Garden Expo

Shanghai, China

Architect: HKS Architects & Designers

Developer: Jiangsu Yuanboyuan Construction and Development Co., Ltd

Other: Interior Designer: YANG & ASSOCIATES GROUP



New Bund 31

Shanghai, China

Architect: Palmer and Turner Consultants (Shanghai) Ltd.

Developer: Shun Tak Qiantan (Shanghai) Cultural and Real Estate Company Limited

Other: Neri & Hu Design and Research Office (Interior Designer), Jerde (Master Planning), Theatre Projects (Theatre Design)



Shanghai Panlong Tiandi

Shanghai, China

Architect: BenWood Studio Shanghai BWSS

Developer: Shui On Land

Other: Shui On Xintiandi (Operator), BWSS (Overall planning & new buildings design), TIANHUA (Construction drawing design for new buildings), ECADI (Consultant, planning and construction drawing design of protected buildings)

BEST INFRASTRUCTURE, COMMUNITY & CIVIC PROJECT



Hong Kong University of Science and Technology, Guangzhou (HKUSTGZ)

Guangzhou, China

Architect: Kohn Pedersen Fox Associates (Design Architect),

Developer: Hong Kong University of Science and Technology

Other: SCAD (Architectural Design & Research Institute of South China University of Technology Co., Ltd.), Arup, Ayers Saint Gross, James Corner Field Operations, Jacobs, MVA,

SCAD, GZPI, 中铁广州工程局集团有限公司 (China Railway Guangzhou Engineering Group Co., Ltd.), 中铁一局集团有限公司 (China Railway First Group Co., Ltd.), Fisher Marantz Stone, RWDI, SMW, Field Management Services, Cambridge Environmental Research Consultants



New York University Shanghai

Shanghai, China

Architect: Kohn Pedersen Fox Associates

Developer: Lujiazui Properties

Other: Shanghai Construction Group, AOR and Construction



Pragati Maidan Integrated Exhibition & Convention Centre

New Delhi, India

Architect: Aedas

Developer: India Trade Promotion Organisation (ITPO)

Other: Arcop Associates Pvt. Ltd. (Local Architect)

Shapoorji Pallonji E&C (Contractor)

BEST MIXED-USE PROJECT



AIRSIDE

Hong Kong SAR, China

Architect: Ronald Lu & Partners

Developer: Nan Fung Development Limited

Other: Snøhetta Overseas Architecture (Design Architect), Urbis Ltd. (Executive Landscape Architect), Ove Arup & Partners HK (Structural, Geotechnical & Civil /Building Sustainability/Traffic/Façade & BMU/ Fire Consultant: Planning /ICT), - Ove Arup & Partners HK & J. Roger Preston (Building Services Engineer), Colliers International HK (Land Consultant), Arcadis HK (Quantity Surveyor)



Hangzhou Winland Center

Hangzhou, China

Architect: Farrells, Arquitectonica

Developer: Winland Group

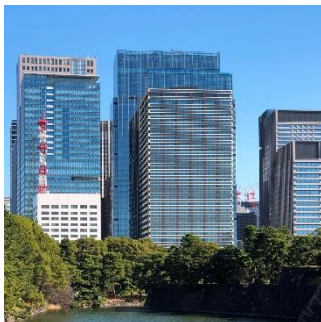
Other: Architecture Design: Farrells, Arquitectonica

Structure Design: Arup, UAD, Landscape Design: Adrian L.

Norman Limited, Interior Design: CL3, Kinetices Interior

Decoration Ltd, Revery Architecture Inc., Lighting Design:

Georges Berne & 8'18', Leox, MEP: WSP Norge, WSP, UAD



Otemachi One

Tokyo, Japan

Architect: NIKKEN SEKKEI LTD, KAJIMA CORPORATION

Developer: MITSUI & CO., LTD. , Mitsui Fudosan Co., Ltd.

Other: Skidmore, Owings & Merrill (facades and office common area design) , office ma (landscape design) ,

Uchihara Creative Lighting Design Inc. (lighting design) ,

Rian Ihara Design Office (sign design) , DENNISTON (

hotel interior design) , DESIGN STUDIO SPIN (hotel

restaurant interior design) , ILYA CORPORATION (

commercial facility design)

BEST OFFICE PROJECT



AIRSIDE

Hong Kong SAR, China

Architect: Ronald Lu & Partners

Developer: Nan Fung Development Limited

Other: Snøhetta Overseas Architecture (Design Architect), Urbis Ltd. (Executive Landscape Architect), Ove Arup & Partners HK (Structural, Geotechnical & Civil /Building Sustainability/Traffic/Facade & BMU/ Fire Consultant: Planning /ICT), - Ove Arup & Partners HK & J. Roger Preston (Building Services Engineer), Colliers International HK (Land Consultant), Arcadis HK (Quantity Surveyor)



HD Hyundai Global R&D Center

Seongnam City, Republic of Korea

Architect: NIKKEN SEKKEI LTD in collaboration with Heerim Architects & Planners Co., Ltd.

Developer: HD Hyundai Global R & D Center (GRC)

Other: Hyundai Engineering & Construction Co., Ltd. (Main Contractor)



Makati Commerce Tower

Makati, Philippines

Architect: Woods Bagot

Developer: EQT Exeter

Other: Esteban Tan & Associates (Local Project Arch)

Barone International (LEED Consultant)

Goudie Associates (ID) Meinhardt (Lighting + Structural, M&E, Façade Engineer) Roy Barry (Vertical Transportation Consultant) RLB (QS) Colliers (Exclusive Leasing Agent &

Property Mgr) Vitamin B (Branding Consultant) Datem (General Contractor), Spectacon Design and Construction Management (Construction Mgt).

BEST REFURBISHED BUILDING



Beijing High-Tech Landmark Ding Hao 3 Reborn Project

Beijing City, China

Architect: NIKKEN SEKKEI LTD in collaboration with Victory Star

Developer: ZHAOTAI GROUP



GRiD

Singapore, Singapore

Architect: SPARK

Developer: GAW Capital / Manful Wings Pte Ltd

Other: Interior, Graphic, Wayfinding & Branding Design: SPARK, Branding, Logo Design & Marketing Collaterals

Collaborator: TRIPPLE, Project Manager: Arcadis Pte Ltd,

Structural + M&E Engineers: ARUP, Lighting Consultant:

Brandston Partnership Inc., Quantity Surveyor: Arcadis

Singapore, Builder: Gennal Industries Pte Ltd, Photo Credits: Fabian Ong, Khoo Guo Jie, Studio Zeros



Lok Fu Place – One Centre – One Place

Hong Kong SAR, China

Architect: AGC Design Ltd.

Developer: Link Asset Management Co. Ltd.

Other: Architect : AGC Design Ltd. / Ronald Lu & Partners

Conceptual Masterplan & Landscape Design : Aedas Ltd.

Structure : APT Engineering Consultant Ltd.

M&E : TAP Consulting Engineers Ltd.

QS : WT Partnership

Contractor : Ka Shun Contractors Ltd. / Jetline Contractors Ltd. / Tactful Building Co.

BEST RESIDENTIAL PROJECT



Charm Premier Grand Gotenyama 2nd & 3rd

Tokyo, Japan

Architect: NIKKEN HOUSING SYSTEM LTD

Developer: Mitsubishi Estate Residence Co., Ltd.

Other: Charm Care Corporation (Operator)



Garden Crescent

Hong Kong SAR, China

Architect: Ronald Lu & Partners

Developer: Easyknit International Holdings Limited

Other: PineBridge Consulting Limited (M & E Consultant)

JMK Consulting Engineers Limited (Structural Engineer)

AECOM Asia Company Limited (Quantity Surveyor)

CTA Consultants Limited (Traffic Consultant)

Meinhardt Façade Technology (HK) Limited (Façade

Consultant), Savills Property Management Limited (Land Consultant), Bills Design Limited (Interior Consultant)



Parksuites

Singapore

Architect: DP Architects

Developer: Far East Organization

Other: KCL Consultants Pte Ltd (C&S Engineer), KTP

International Pte Ltd (M&E Engineer), AECOM Cost

Consulting and Project Management (Quantity Surveyor),

Sitetectonix Pte Ltd (Landscape Architect), Index Design Pte

Ltd (Interior Design Consultant), Woh Hup (Private) Limited

(Main Contractor)

BEST RETAIL PROJECT

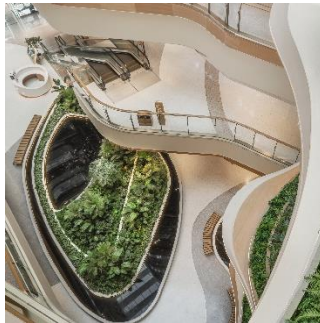


MixC Nanjing

Nanjing, China

Architect: Lead8

Developer: China Resources Land



MOHO

Shanghai, China

Architect: N/A

Developer: Hopson

Other: Benoy Limited (Interior Designer)



Shanghai Panlong Tiandi

Shanghai, China

Architect: BenWood Studio Shanghai BWSS

Developer: Shui On Land

Other: Shui On Xintiandi (Operator), BWSS (Overall planning & new buildings design), TIANHUA (Construction drawing design for new buildings), ECADI (Consultant, planning and construction drawing design of protected buildings)

BEST URBAN REGENERATION PROJECT



ESR Higashi Ogishima Distribution Center

Higashi, Japan

Architect: Tokyu Construction

Developer: ESR Group Limited



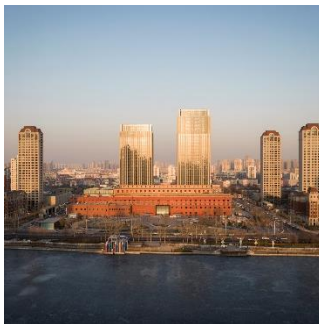
The Exchange TRX

Kuala Lumpur, Malaysia

Architect: Grimshaw Architects LLP

Developer: Lendlease Development Malaysia in partnership with TRX City Sdn Bhd.

Other: GDP Architects, DP Architects, Leonard Design Architects, OCULUS, Pentago



Tianjin Jinmao Plaza

Shanghai, China

Architect: Woods Bagot

Developer: Jinmao Group

Other: Tianjin University Research Institute of Architectural Design & Urban Planning(LDI)

Jo-Ron Sofron (Façade Consultant)

BEST NEW DEVELOPMENT



K11 Shanghai, Huaihai Middle Road

Shanghai, China

Architect: Lead8

Developer: New World China Land Limited

Other: Leigh & Orange (Executive Architect and Tower Designer), PLA (Landscape Designer), ECADI (Local Design Institute), BIG (Cultural Building Architect)



Proposed Composite Development at 28 Tonkin Street

Hong Kong SAR, China

Architect: Ronald Lu & Partners (Hong Kong) Ltd.

Developer: Chinachem Group & Urban Renewal Authority

Other: Structural Engineer: Ben Tse & Associates Ltd.

Building Services Engineer: Aurecon Hong Kong Ltd.

Interior Designers: Bill's Design Ltd.

Environmental Consultant: Beexergy Consulting Ltd.

Main Contractor: Gammon Construction Ltd.



Tung Chung East 21st Century Business Hub

Hong Kong SAR, China

Architect: SKIDMORE, OWINGS & MERRILL

Developer: Chinachem Group

Other: Executive Architect – Andrew Lee King Fun & Associates Architects Ltd

Design Landscape Architect – Morphis

Executive Landscape Architect – URBIS Limited

Structural Engineer – AECOM

E&M and Sustainability Engineer – WSP (Asia) Limited

Façade Engineer – Arup

BEST NEW MEGA DEVELOPMENT



GLP ALFALINK Sagamihara

Sagamihara City, Kanagawa, Japan

Architect: Takenaka Corporation

Developer: GLP Japan Inc.

Other: Creative director: Kashiwa Sato (SAMURAI)



The Exchange TRX

Kuala Lumpur, Malaysia

Architect: Grimshaw Architects LLP

Developer: Lendlease Development Malaysia in partnership with TRX City Sdn Bhd.

Other: GDP Architects, DP Architects, Leonard Design Architects, OCULUS, Pentago



Westlake 66

Hangzhou, China

Architect: Kohn Pedersen Fox Associates

Developer: Hang Lung Properties

Other: Wong & Ouyang (Hong Kong) Ltd (Executive Architect)
Zhejiang Province Institute of Architectural Design and Research (Local Design Institute) ALT Group (Façade Consultant) Arup International Co Ltd (Structural Engineer)
J. Roger Preston Ltd (MEP Engineer) Adrian L. Norman Ltd

(Landscape Designer)